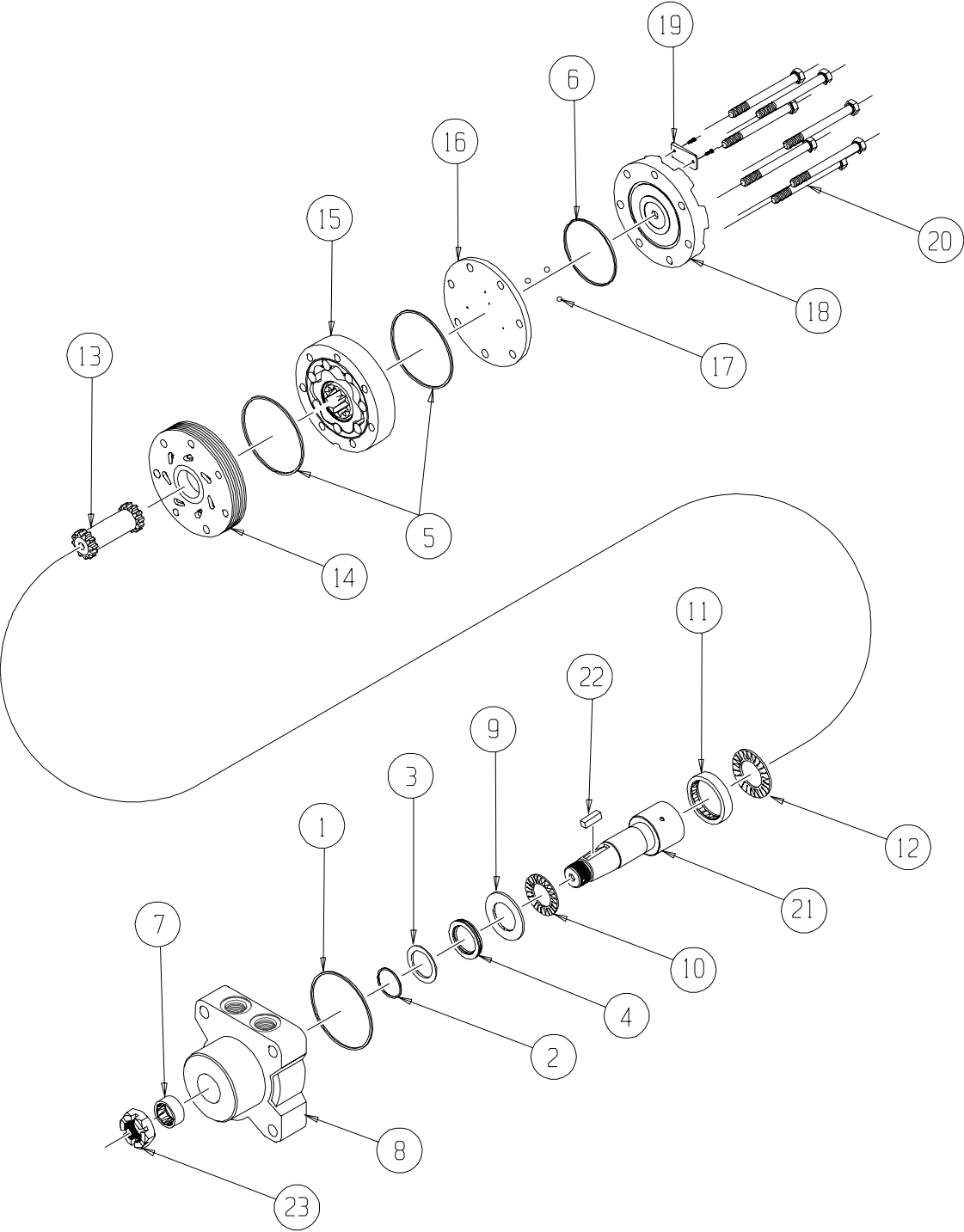


CE (400) Series



CE (400) SERIES MOTOR COMPONENTS

SEAL KIT 400444200

| DESCRIPTION | EXP. VIEW ITEM # | KIT |
|---|------------------|---|
| HOUSING SEAL | 1 | ITEMS # 1-6 INCLUDED IN SEAL KIT 400444200 |
| METAL SHIM | 2 | |
| TEFLON BACK-UP SEAL | 3 | |
| SHAFT SEAL | 4 | |
| BODY SEALS (2) | 5 | |
| ENDCOVER SEAL | 6 | |
| NOTE: REAR BEARING (#11) MUST BE REMOVED TO REPLACE SEAL KIT ITEMS #2-4. IT IS RECOMMENDED THAT A NEW REAR BEARING BE INSTALLED WHEN REPLACING THESE ITEMS. | | |

MISCELLANEOUS KITS

| DESCRIPTION | EXP. VIEW ITEM # | KIT |
|-------------------------------|------------------|------------|
| FRONT HOUSING BEARING | 7 | 400180001 |
| FRONT THRUST WASHER | 9 | 500018253 |
| FRONT THRUST BEARING | 10 | 500018252 |
| REAR HOUSING BEARING | 11 | 500018002 |
| REAR THRUST BEARING | 12 | 500018059 |
| FORWARD MANIFOLD (CCW O R"0") | 14 | 500015006 |
| REVERSE MANIFOLD (CW OR "1") | 14 | 500015007 |
| BALANCE PLATE | 16 | 500012001 |
| STEEL BALLS (3) | 17 | 500018048 |
| ENDCOVER | 18 | 500016001 |
| 1000 PSI RELIEF VALVE | NOT SHOWN | 500018228 |
| 2000 PSI RELIEF VALVE | NOT SHOWN | 500018231 |
| 3/4-28 SLOTTED NUT | NOT SHOWN | 200229300 |
| 3/4-28 PACK NUT | NOT SHOWN | 200018077 |
| 1.00-20 UNEF SOLID NUT | 24 | 500449303 |
| 1.00-20 UNEF LOCK NUT | 24 | 300339303P |
| 1.00-20 UNEF SLOTTED NUT | 24 | 500449304 |

ROTORS, DRIVE LINKS AND SPACERS, AND BOLTS

WHEN CHANGING MOTOR DISPLACEMENTS, A MATCHING ROTOR AND BOLT SET KIT MUST BE ORDERED. A NEW DRIVE LINK KIT MAY BE NECESSARY.

| EXPLODED VIEW ITEM # | 15 | 15 | 13 | 20 |
|----------------------|--------------------|--------------------|----------------|--------------|
| DISPLACEMENT | STANDARD ROTOR KIT | FREETURN ROTOR KIT | DRIVE LINK KIT | BOLT SET KIT |
| 120 | 500087005 | 500087008 | 400140007 | 500445006 |
| 160 | 500137005 | 500137011 | 400140007 | 500445006 |
| 200 | 500167004 | 500167011 | 400140012 | 500445012 |
| 230 | 500147002 | 500147004 | 400140014 | 500445014 |
| 260 | 500227000 | 500227004 | 400140016 | 500445014 |
| 300 | 500247005 | 500247011 | 400140018 | 500445018 |
| 350 | 500207000 | 500207004 | 400140020 | 500445026 |
| 375 | 500307005 | 500307011 | 400140024 | 500445024 |
| 470 | 500357003 | 500357005 | 400140020 | 500445026 |
| 540 | 500407005 | 500407011 | 400140032 | 500445032 |
| 750 | 500607005 | 500607011 | 400140045 | 500445045 |

HOUSING KITS

HOUSING KITS INCLUDE THE FRONT BEARING (#7), METAL SHIM (#2), TEFLON BACK-UP SEAL (#3), AND SHAFT SEAL (#4) INSTALLED IN THE HOUSING.

| DESCRIPTION | EXPLODED VIEW ITEM # | HOUSING KIT |
|---|----------------------|-------------|
| #W38- WHEEL MOUNT W/1/2" BSP.F PORTS | 8 | 400130005 |
| #W31- WHEEL MOUNT (7/8" O-RING PORTS) | 8 | 400130007 |
| #K31- WHEEL MOUNT W/BRAKE MOUNT (7/8" O-RING PORTS) | 8 | 400130011 |
| #K38- WHEEL MOUNT W/BRAKE MOUNT (1/2"-14 BSP.F PORTS) | 8 | 400130031 |
| #W38- WHEEL MOUNT WITH VALVE CAVITY (1/2"-14 BSP.F PORTS) | 8 | 400130035 |
| #W31- WHEEL MOUNT W/VALVE CAVITY (7/8" O-RING PORTS) | 8 | 400130037 |

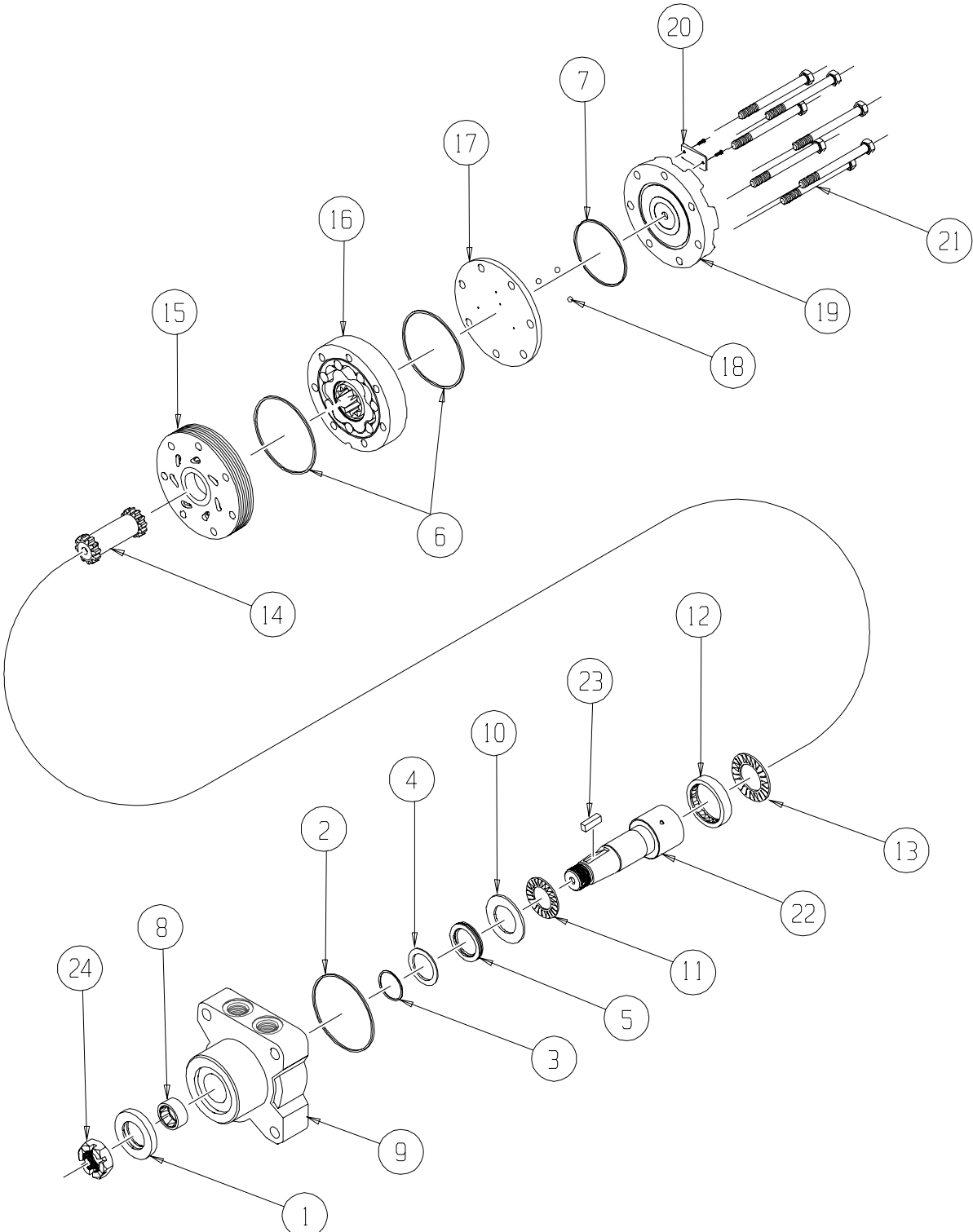
SHAFTS AND RELATED COMPONENTS KITS

SHAFT KITS COME WITH RELATED SHAFT COMPONENTS (i.e. keys, nuts, etc.)

TO ORDER INDIVIDUAL SHAFT COMPONENTS (i.e. keys, nuts, bolts, washers or wire rings) USE THE KIT NUMBER FOR EACH INDIVIDUAL PART.

| EXPLODED VIEW ITEM # | 21 | 22 | 23 | NOT SHOWN | NOT SHOWN | NOT SHOWN |
|-------------------------------|-----------|-----------|-----------|-----------|------------|---------------|
| DESCRIPTION | SHAFT KIT | KEY KIT | NUT KIT | BOLT KIT | WASHER KIT | WIRE RING KIT |
| #10- 1" STRAIGHT | 400110000 | 500449100 | | --- | --- | --- |
| #13- 1" TAPERED | 400110001 | 200229102 | SEE MISC. | --- | --- | --- |
| #02- 6-B SPLINE (1") | 400110002 | --- | KITS LIST | --- | --- | --- |
| #22- 1-1/4" TAPERED | 400110003 | 500449101 | | --- | --- | --- |
| #20- 1-1/4" STRAIGHT | 400110004 | 500449102 | | 500449301 | 500449302 | 500449201 |
| #23- 14 TOOTH SPLINE (1-1/4") | 400110005 | --- | | --- | --- | 500449201 |
| #25- 1-1/4" TAPERED EXTENDED | 400110010 | 200229102 | | --- | --- | --- |

CE (420) Series



CE (420) SERIES MOTOR COMPONENTS

SEAL KIT 400444300

| DESCRIPTION | EXP. VIEW ITEM # | KIT |
|---|------------------|---|
| DUST SEAL | 1 | ITEMS # 1-7 INCLUDED IN SEAL KIT 400444300 |
| REAR HOUSING SEAL | 2 | |
| METAL SHIM | 3 | |
| BACK-UP SEAL | 4 | |
| SHAFT SEAL | 5 | |
| BODY SEALS (2) | 6 | |
| ENDCOVER SEAL | 7 | |
| NOTE: REAR BEARING (#12) MUST BE REMOVED TO REPLACE SEAL KIT ITEMS #1-3. OR FRONT THRUST BEARING AND WASHERS (#9-10). IT IS RECOMMENDED THAT A NEW REAR BEARING BE INSTALLED WHEN ASSEMBLING. | | |

MISCELLANEOUS KITS

| DESCRIPTION | EXP. VIEW ITEM # | KIT |
|-------------------------------|------------------|------------|
| FRONT HOUSING BEARING | 8 | 400018006 |
| FRONT THRUST WASHER | 10 | 500018253 |
| FRONT THRUST BEARING | 11 | 500018252 |
| REAR HOUSING BEARING | 12 | 500018002 |
| REAR THRUST BEARING | 13 | 500018059 |
| FORWARD MANIFOLD (CCW O R"0") | 15 | 500015006 |
| REVERSE MANIFOLD (CW OR "1") | 15 | 500015007 |
| BALANCE PLATE | 17 | 500012001 |
| STEEL BALLS (3) | 18 | 500018048 |
| ENDCOVER | 19 | 500016001 |
| 1.00-20 UNEF SOLID NUT | NOT SHOWN | 500449303 |
| 1.00-20 UNEF LOCK NUT | NOT SHOWN | 300339303P |
| 1.00-20 UNEF SLOTTED NUT | 24 | 500449304 |

ROTORS, DRIVE LINKS AND SPACERS, AND BOLTS

WHEN CHANGING MOTOR DISPLACEMENTS, A MATCHING ROTOR AND BOLT SET KIT MUST BE ORDERED. A NEW DRIVE LINK KIT MAY BE NECESSARY.

| EXPLODED VIEW ITEM # | 16 | 16 | 14 | 21 |
|----------------------|--------------------|--------------------|----------------|--------------|
| DISPLACEMENT | STANDARD ROTOR KIT | FREETURN ROTOR KIT | DRIVE LINK KIT | BOLT SET KIT |
| 120 | 500087005 | 500087008 | 400140007 | 500445006 |
| 160 | 500137005 | 500137011 | 400140007 | 500445006 |
| 200 | 500167004 | 500167011 | 400140012 | 500445012 |
| 230 | 500147002 | 500147004 | 400140014 | 500445014 |
| 260 | 500227000 | 500227004 | 400140016 | 500445014 |
| 300 | 500247005 | 500247011 | 400140018 | 500445018 |
| 350 | 500207000 | 500207004 | 400140020 | 500445026 |
| 375 | 500307005 | 500307011 | 400140024 | 500445024 |
| 470 | 500357003 | 500357005 | 400140020 | 500445026 |
| 540 | 500407005 | 500407011 | 400140032 | 500445032 |
| 750 | 500607005 | 500607011 | 400140045 | 500445045 |

HOUSING KITS

HOUSING KITS INCLUDE THE FRONT BEARING (#8), METAL SHIM (#3), BACK-UP SEAL (#4), AND SHAFT SEAL (#5) INSTALLED IN THE HOUSING.

| DESCRIPTION | EXPLODED VIEW ITEM # | HOUSING KIT |
|---|----------------------|-------------|
| #W35- SETBACK FLANGE (9/16" O-RING PORTS) | 9 | 400130044 |
| #W38- SETBACK FLANGE (1/2-14 BSP.F PORTS) | 9 | 400130045 |
| #W31- SETBACK FLANGE (7/8-14 O-RING PORTS) | 9 | 400130047 |
| #P38- SETBACK FLANGE 3.25 PILOT (1/2-14 BSP.F PORTS) | 9 | 400130065 |
| #P35- SETBACK FLANGE 3.25 PILOT (9/16-18 BSP.F PORTS) | 9 | 400130064 |

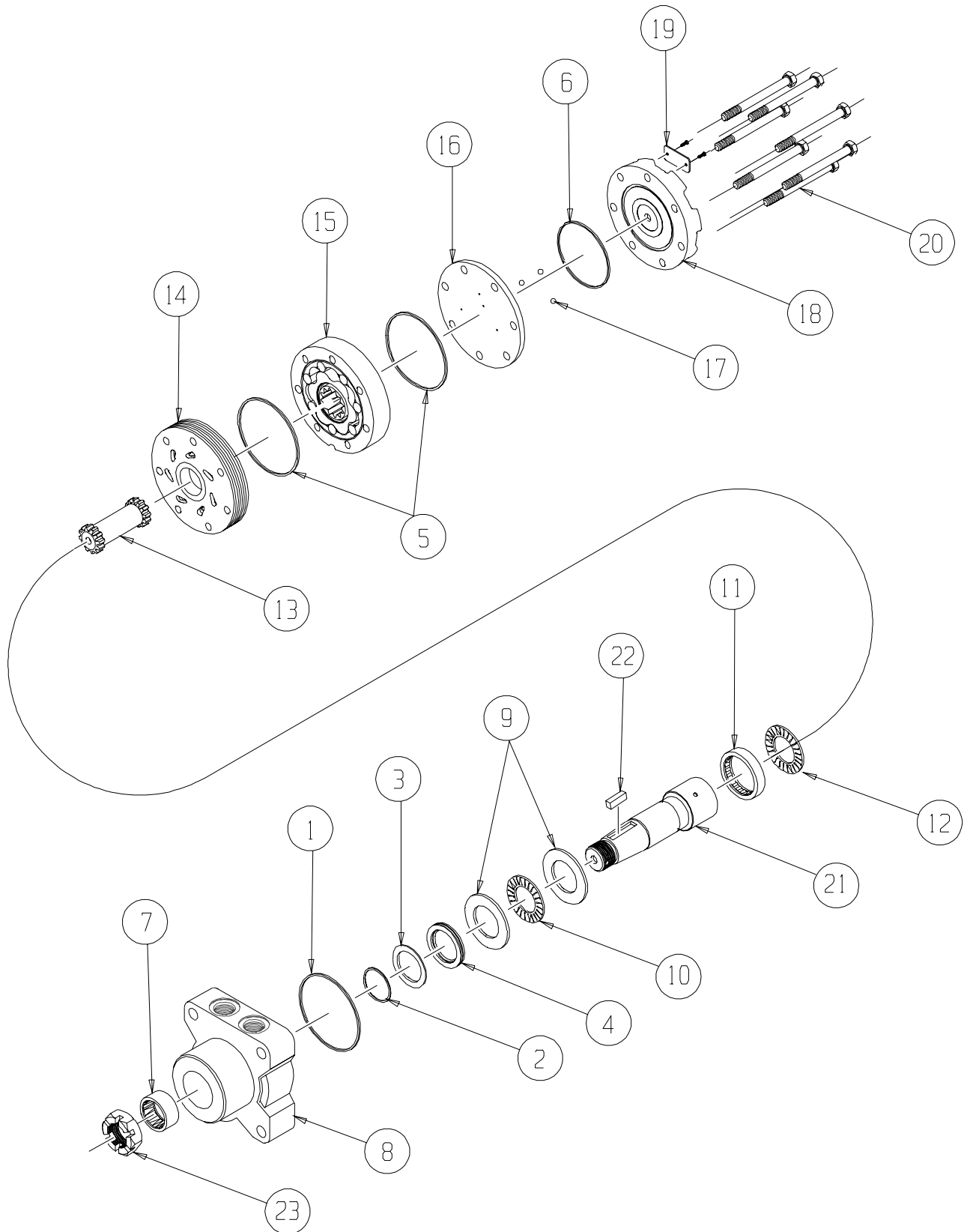
SHAFTS AND RELATED COMPONENTS KITS

SHAFT KITS COME WITH RELATED SHAFT COMPONENTS (i.e. keys, nuts, etc.)

TO ORDER INDIVIDUAL SHAFT COMPONENTS (i.e. keys, nuts, bolts, washers or wire rings) USE THE KIT NUMBER FOR EACH INDIVIDUAL PART.

| EXPLODED VIEW ITEM # | 22 | 23 | 24 |
|----------------------|-----------|-----------|-----------|
| DESCRIPTION | SHAFT KIT | KEY KIT | NUT KIT |
| #22- 1-1/4" TAPERED | 400110043 | 500449106 | SEE MISC. |

CE (430) Series



CE (430) SERIES MOTOR COMPONENTS

SEAL KIT 400444250

| DESCRIPTION | EXP. VIEW ITEM # | KIT |
|---|------------------|---|
| HOUSING SEAL | 1 | ITEMS # 1-6 INCLUDED IN SEAL KIT 400444250 |
| METAL SHIM | 2 | |
| BACK-UP SEAL | 3 | |
| SHAFT SEAL | 4 | |
| BODY SEALS (2) | 5 | |
| ENDCOVER SEAL | 6 | |
| NOTE: REAR BEARING (#11) MUST BE REMOVED TO REPLACE SEAL KIT ITEMS #2-4. OR FRONT THRUST BEARING AND WASHERS (#9-10). IT IS RECOMMENDED THAT A NEW REAR BEARING BE INSTALLED WHEN ASSEMBLING. | | |

MISCELLANEOUS KITS

| DESCRIPTION | EXP. VIEW ITEM # | KIT |
|---------------------------------|------------------|-----------|
| FRONT HOUSING BEARING | 7 | 500018203 |
| FRONT THRUST WASHER (2) | 9 | 500118002 |
| FRONT THRUST BEARING | 10 | 500118003 |
| REAR HOUSING BEARING | 11 | 500018002 |
| REAR THRUST BEARING | 12 | 500018059 |
| FORWARD MANIFOLD | 14 | 500015006 |
| REVERSE MANIFOLD | 14 | 500015007 |
| BALANCE PLATE | 16 | 500012001 |
| STEEL BALLS (3) | 17 | 500018048 |
| ENDCOVER | 18 | 500016001 |
| 1000 PSI RELIEF VALVE | NOT SHOWN | 500018228 |
| 2000 PSI RELIEF VALVE | NOT SHOWN | 500018231 |
| 3000 PSI RELIEF VALVE | NOT SHOWN | 500018221 |
| 1.125 - 18 UNEF SLOTTED HEX NUT | 23 | 700018038 |
| 1.125 - 18 UNEF SOLID HEX NUT | 23 | 700018054 |
| M24 X 1.5 SLOTTED HEX NUT (#46) | 23 | 500449306 |

ROTORS, DRIVE LINKS AND SPACERS, AND BOLTS

WHEN CHANGING MOTOR DISPLACEMENTS, A MATCHING ROTOR AND BOLT SET KIT MUST BE ORDERED. A NEW DRIVE LINK KIT MAY BE NECESSARY.

| EXPLODED VIEW ITEM # | 15 | 15 | 13 | 20 |
|----------------------|--------------------|--------------------|----------------|--------------|
| DISPLACEMENT | STANDARD ROTOR KIT | FREETURN ROTOR KIT | DRIVE LINK KIT | BOLT SET KIT |
| 120 | 500087005 | 500087008 | 400140007 | 500445006 |
| 160 | 500137005 | 500137011 | 400140007 | 500445006 |
| 200 | 500167004 | 500167011 | 400140012 | 500445012 |
| 230 | 500147002 | 500147004 | 400140014 | 500445014 |
| 260 | 500227000 | 500227004 | 400140016 | 500445014 |
| 300 | 500247005 | 500247011 | 400140018 | 500445018 |
| 350 | 500207000 | 500207004 | 400140020 | 500445026 |
| 375 | 500307005 | 500307011 | 400140024 | 500445024 |
| 470 | 500357003 | 500357005 | 400140020 | 500445026 |
| 540 | 500407005 | 500407011 | 400140032 | 500445032 |
| 750 | 500607005 | 500607011 | 400140045 | 500445045 |

HOUSING KITS

HOUSING KITS INCLUDE THE FRONT BEARING (#7), METAL SHIM (#2), BACK-UP SEAL (#3), AND SHAFT SEAL (#4) INSTALLED IN THE HOUSING.

| DESCRIPTION | EXPLODED VIEW ITEM # | HOUSING KIT |
|---|----------------------|-------------|
| #W31- SETBACK FLANGE (7/8 - 14 PORTS) | 8 | 400130020 |
| #K31- SETBACK FLANGE WITH BRAKE MOUNT (7/8 - 14 PORTS) | 8 | 400130021 |
| #W35- SETBACK FLANGE (9/16 - 18 PORTS) | 8 | 400130024 |
| #W38- SETBACK FLANGE (1/2 - 14 BSP.F) | 8 | 400130025 |
| #W31- SETBACK FLANGE WITH RELIEF VALVE (7/8 - 14 PORTS) | 8 | 400130050 |
| #K38- WHEEL MOUNT W/BRAKE MOUNT (1/2"-14 BSP.F PORTS) | 8 | 400130055 |
| #W38- WHEEL MOUNT W/VALVE CAVITY (1/2"-14 BSP.F PORTS) | 8 | 400130056 |

SHAFTS AND RELATED COMPONENTS KITS

SHAFT KITS COME WITH RELATED SHAFT COMPONENTS (i.e. keys, nuts, etc.)

TO ORDER INDIVIDUAL SHAFT COMPONENTS (i.e. keys, nuts, bolts, washers or wire rings) USE THE KIT NUMBER FOR EACH INDIVIDUAL PART.

| EXPLODED VIEW ITEM # | 21 | 22 | 23 |
|----------------------|-----------|-----------|-----------|
| DESCRIPTION | SHAFT KIT | KEY KIT | NUT KIT |
| #31- 1-1/2" TAPERED | 400110031 | 500449106 | SEE MISC. |
| #28- 35MM TAPERED | 400110053 | 500449104 | KITS LIST |